

BaleTainer®

Fully automatic. Easy to operate. Reliable.



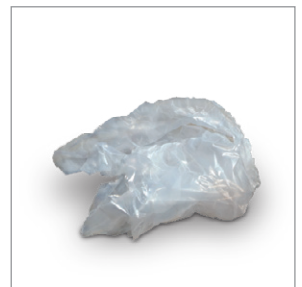
Cardboard packaging



Paper



PET bottles



Film

A new dimension for large-scale use

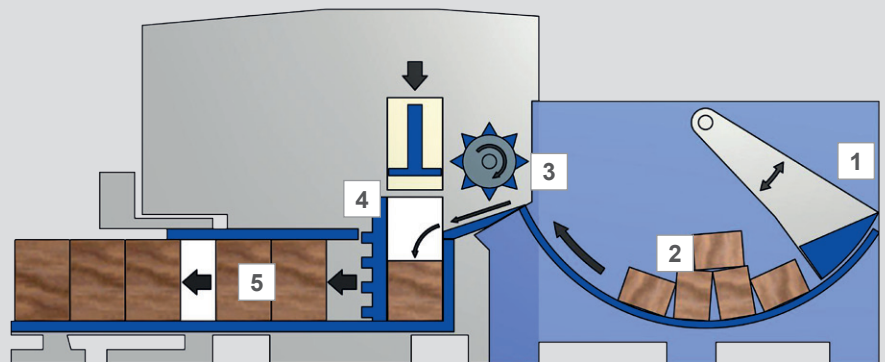
The **BaleTainer®** is a fully automatic baling press which easily compacts large quantities of paper, cardboard packaging, film and empty PET bottles into high-density bales. The **BaleTainer®** is suitable for a wide range of applications. Whether in the retail trade, beverage industry, logistics sector or production – the **BaleTainer®** fits in anywhere! The **BaleTainer®** can be installed on the premises directly at the place where the material is accruing. This reduces the time and the

costs required for long transport journeys and improves in-house logistics. Your material is no longer lying loosely on the premises, thus creating an atmosphere of order and cleanliness and saving space.

The **BaleTainer®** bales can be directly sold to paper mills and recycling companies and achieve maximum proceeds, which makes your disposal procedures profitable.

The operational principle

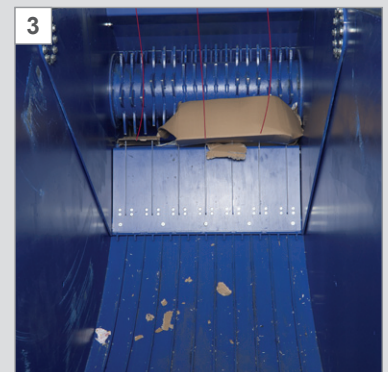
The material is manually or automatically thrown into the **BaleTainer®**. It is then automatically conveyed into the pressing chamber and pressed in segments into bales. The finished bales are automatically tied up and pushed out.



1 The material is thrown into the feed channel of the **BaleTainer®** without pre-shredding.



2 A swing device then pushes the material to the rotor.



3 The strong rotor conveys the material into the pressing chamber.

4

The hydraulically operated pressing plate moves downwards and compacts the material in the pressing chamber according to the segmental principle. As soon as a segment has been finished, it is pushed out of the pressing chamber into the bale channel.



5 The finished bales can be stacked and are discharged fully automatically.

Easy and flexible filling

Filling options of the BaleTainer®



Manual filling at ground level



Feed opening through wall



Filling by means of a conveyor belt



Filling by means of a lift truck

Installation options of the BaleTainer®



Installation at ground level



Installation at a ramp



Outdoor installation with wall connection

At home everywhere – the BaleTainer® fits in any industry!



Beverage industry



Retail trade

The fully automatic concept saves manpower and working hours!

Easy operation



In case of outdoor installations, an external control panel can be mounted on the filling side and operator side of the machine.

Intuitive operation



Via a traffic-light system, the status signal lamp displays the operating status of the **BaleTainer®** at a glance to the operator, e.g. the early display of required wire change and bale discharge.

Continuous operation

The **BaleTainer®** can be used 24 / 7. Since the filling can be done automatically and the bales are discharged fully automatically the **BaleTainer®** can be integrated in the fluent production cycle.

No pre-shredding of material

Due to the large feed opening, large quantities of PET bottles and large cardboard packagings such as octabins and cardboard pallets can be easily thrown in without pre-shredding.



Octabin



Cardboard pallet



Continuous operation



Warehouse and Logistics



Production

Direct marketing due to BaleTainer®

Apart from the machine quality, the quality of the bales is important for our customers. The higher the bale density, the lower the transport costs and the higher the proceeds resulting from the sale of the bales – **no more costs for „waste“**.

The **BaleTainer®** bales offer all prerequisites for direct marketing. „**Direct marketing**“ signifies: the bales have the right size and weight such that they can be directly sold to paper mills and recycling companies.

Thus, the additional costs for having not directly marketable bales pressed into another form by a waste disposal company and transporting the bales to such companies, are saved and **higher proceeds** are achieved.

The **BaleTainer®** bales can be manually or **fully automatically tied up by means of wire** and be stored in stacks.

At **24 t**, trucks and containers can thus be filled to their optimum capacity. The number of journeys is reduced which leads to a proportionately less amount of CO₂ emissions and a massive reduction of transport costs.

With a pressure force of 60 tons per segment, the entire bale (3 segments) is compacted by means of a **surface pressure of 180 tons**.



Wire setting



Bale storage

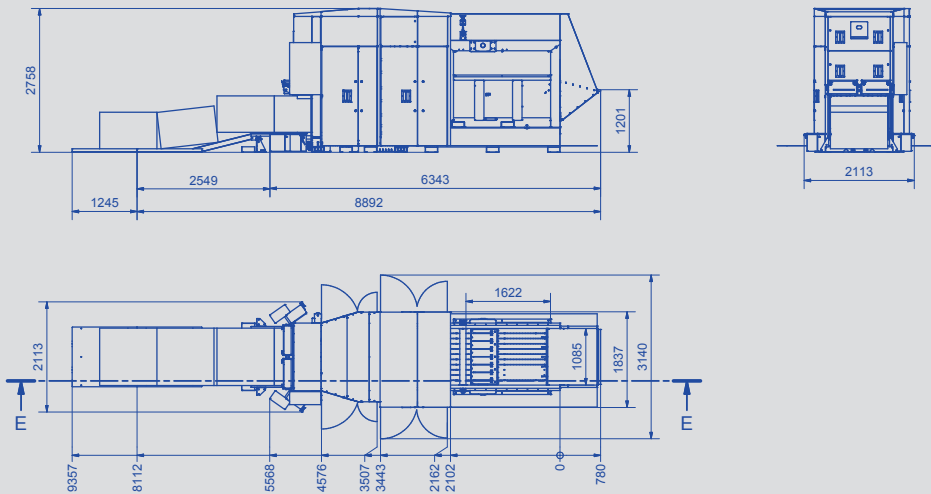


Transport capacity used at its optimum

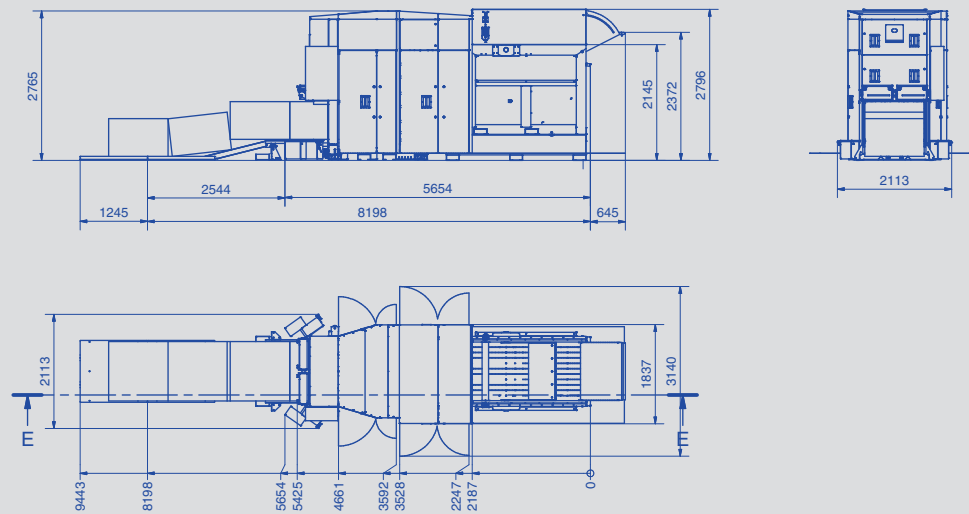


Dimensions

Manual filling at ground level



Manual filling at a ramp



Pressing force in kN	600	Bale weight	up to 400 kg (3 slices)
Dimensions (W x H x D)	1,85 x 2,8 x 6,5 m	Bale dimensions	1,1 x 1,1 x 0,8 m (3 slices)
Machinery weight	6.000 - 8.000 kg	Surface pressure	180 t/m ³
Electricity supply	400 V, 3 ph		